



MAX-PLANCK-GESELLSCHAFT



# Physical Biology Circle Meeting

Max Planck Institute for the Physics of Complex Systems

## International Focus Workshop 13 - 15 September 2021

The Physical Biology Circle Meeting will bring together European researchers at the leading edge of research in experimental and theoretical biological physics. The meeting aims at discussing research topics at the interface between physics and biology and at fostering interactions between key institutions playing a role in this quickly growing field. Emphasis is put on the active participation of researchers on the PhD and postdoc levels with lots of opportunities for contributed talks by PhD students and postdocs. All fields of biophysics are welcome.

*We plan for a hybrid workshop with a number of participants on-site and the others connected via video conference.*

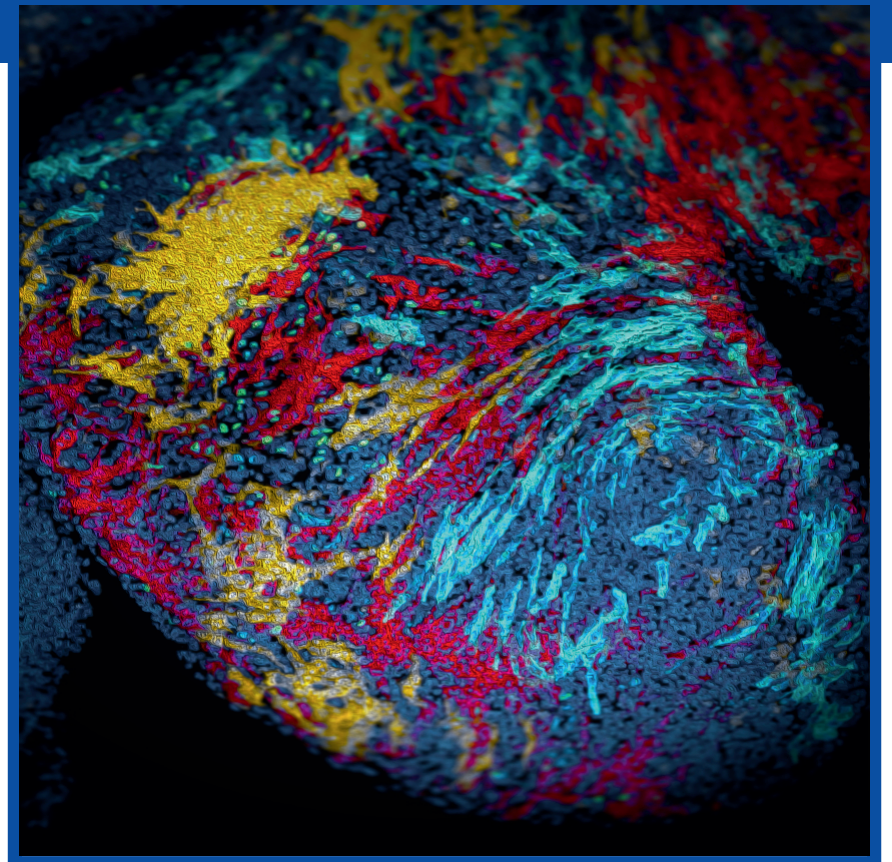
### Topics

- Tissue mechanics
- Stochastic thermodynamics
- Phase separation
- Epigenetics
- Chromatin dynamics
- Biological hydrodynamics
- Active matter
- Cell signalling
- Morphogenesis
- Soft matter

Only applications from members of participating institutions can be considered.  
**Application deadline is 31st July 2021.**

Applications by members of participating institutions are welcome and should be made by using the application form on the event's web page. The number of attendees is limited. The registration fee for the international focus workshop is 140 Euro and should be paid by all participants. Costs for accommodation and meals will be covered by the Max Planck Institute.

**For further information please contact:**  
Visitors Program – Claudia Domaschke  
MPI for the Physics of Complex Systems  
Nöthnitzer Str. 38, D-01187 Dresden  
Tel: +49-351-871-1932  
Fax: +49-351-871-2199  
cmbp21@pks.mpg.de  
www.pks.mpg.de/cmbp21/



### Invited speakers:

**Nathalie Balaban**  
Hebrew University of Jerusalem

**Anne Grapin-Botton**  
MPI-CBG Dresden

### Local coordinators:

**Frank Jülicher**  
MPI-PKS Dresden

**Steffen Rulands**  
MPI-PKS Dresden

### Node coordinators:

**Aurélie Bertin**  
Institut Curie

**Sara Cuylen-Häring**  
EMBL Heidelberg

**Alba Diz-Muñoz**  
EMBL Heidelberg

**Stephan Grill**  
MPI-CBG Dresden

**Karsten Kruse**  
Université de Genève

**Franziska Lautenschläger**  
Universität des Saarlandes

**François Nedelec**  
University of Cambridge

**Albrecht Ott**  
Universität des Saarlandes

**Ewa Paluch**  
University of Cambridge

**Guillaume Salbreux**  
Université de Genève

**Michael Sixt**  
IST Austria

**Thomas Surrey**  
Centre for Genomic  
Regulation

**Xavier Trepas**  
IBEC Barcelona

**Jeroen van Zon**  
AMOLF

### Organisation:

Claudia Domaschke  
MPI-PKS Dresden